

SUPPLEMENTAL/BID BULLETIN NO. 2

PROJECT : Generator Set for LANDBANK Aurora Boulevard Office Building under Project Identification No. LBP-GIBAC-ITB-GS-20250312-01


IMPLEMENTOR : Bids and Awards Committee for Goods and Infrastructure (GI-BAC)

DATE : 11 June 2025

This Supplemental/Bid Bulletin is issued to modify, amend and/or clarify specific items in the Bidding Documents. It shall form an integral part of the Bidding Documents.

Modification, amendment and/or clarification:

1. The Terms of Reference (Annexes D-1 to D-13), Technical Specifications (Section VII) and Checklist of Bidding Documents (Item No. 12 of Technical Documents) have been revised. Please see attached revised Annexes D-1 to D-5 and specific sections of the Bidding Documents.
2. The Submission and Opening of Bids is rescheduled on June 19, 2025 at 10:00 A.M. through videoconferencing using Microsoft (MS) Teams application.
3. Responses to bidder's queries/clarifications per attached Annexes H-1 and H-2.


EMMANUEL G. HIO, JR.
Chairperson, GI-BAC

Technical Specifications

Specifications	Statement of Compliance
	<p>Bidders must signify their compliance with the Technical Specifications/Terms of Reference by stating below either "Comply" or Not "Comply"</p> <p>Statements of "Comply" or "Not Comply" must be supported by evidence in a Bidders Bid and cross-referenced to that evidence. Evidence shall be in the form of manufacturer's un-amended sales literature, unconditional statements of specification and compliance issued by the manufacturer, samples, independent test data etc., as appropriate. A statement that is not supported by evidence or is subsequently found to be contradicted by the evidence presented will render the Bid under evaluation liable for rejection. A statement either in the Bidders statement of compliance or the supporting evidence that is found to be false either during Bid evaluation, post-qualification or the execution of the Contract may be regarded as fraudulent and render the Bidder or supplier liable for prosecution subject to the applicable laws and issuances.</p>
<p>Generator Set for LANDBANK Aurora Boulevard Office Building</p> <p>1. Scope of works, minimum specifications and other requirements per attached Revised Terms of Reference (Annexes D-1 to D-13) and Bill of Quantities (Annex E).</p> <p>2. Documentary requirements enumerated in the Revised Annexes D-1 and D-2 of the Revised Terms of Reference.</p> <p>Non-submission of the above documents/requirements may result in the post-disqualification of the bidder.</p>	

Conforme:

Name of Bidder

Signature over Printed Name of
Authorized Representative

Position

Checklist of Bidding Documents for Procurement of Goods and Services

The documents for each component should be arranged as per this Checklist. Kindly provide guides or dividers with appropriate labels.

Eligibility and Technical Components (PDF File)

- ***The Eligibility and Technical Component shall contain documents sequentially arranged as follows:***

- **Eligibility Documents – Class “A”**

Legal Eligibility Documents

1. Valid PhilGEPS Registration Certificate (Platinum Membership) (all pages).

Technical Eligibility Documents

2. Duly notarized Secretary's Certificate attesting that the signatory is the duly authorized representative of the prospective bidder, and granted full power and authority to do, execute and perform any and all acts necessary and/or to represent the prospective bidder in the bidding, if the prospective bidder is a corporation, partnership, cooperative, or joint venture or Original Special Power of Attorney of all members of the joint venture giving full power and authority to its officer to sign the OSS and do acts to represent the Bidder. (sample form - Form No. 7).
3. Statement of the prospective bidder of all its ongoing government and private contracts, including contracts awarded but not yet started, if any, whether similar or not similar in nature and complexity to the contract to be bid, within the last five (5) years from the date of submission and receipt of bids. The statement shall include all information required in the sample form (Form No. 3).
4. Statement of the prospective bidder identifying its Single Largest Completed Contract (SLCC) similar to the contract to be bid within the relevant period as provided in the Bidding Documents. The statement shall include all information required in the sample form (Form No. 4).

Financial Eligibility Documents

5. The prospective bidder's audited financial statements, showing, among others, the prospective bidder's total and current assets and liabilities, stamped "received" by the BIR or its duly accredited and authorized institutions, for the preceding calendar year which should not be earlier than two (2) years from the date of bid submission.
6. The prospective bidder's computation for its Net Financial Contracting Capacity (NFCC) following the sample form (Form No. 5), or in the case of Procurement of Goods, a committed Line of Credit from a Universal or Commercial Bank in lieu of its NFCC computation.

○ **Eligibility Documents – Class "B"**

7. Duly signed valid joint venture agreement (JVA), in case the joint venture is already in existence. In the absence of a JVA, duly notarized statements from all the potential joint venture partners stating that they will enter into and abide by the provisions of the JVA in the instance that the bid is successful shall be included in the bid. Failure to enter into a joint venture in the event of a contract award shall be ground for the forfeiture of the bid security. Each partner of the joint venture shall submit its legal eligibility documents. The submission of technical and financial eligibility documents by any of the joint venture partners constitutes compliance, provided, that the partner responsible to submit the NFCC shall likewise submit the statement of all its ongoing contracts and Audited Financial Statements.
8. For foreign bidders claiming by reason of their country's extension of reciprocal rights to Filipinos, Certification from the relevant government office of their country stating that Filipinos are allowed to participate in government procurement activities for the same item or product.
9. Certification from the DTI if the Bidder claims preference as a Domestic Bidder.

○ **Technical Documents**

10. Bid Security (if in the form of a Surety Bond, submit also a certification issued by the Insurance Commission).
11. Section VI – Schedule of Requirements with signature of bidder's authorized representative.
12. **Revised Section VII** – Specifications with response on compliance and signature of bidder's authorized representative.
13. Duly notarized Omnibus Sworn Statement (OSS) (sample form - Form No.6).

Note: During the opening of the first bid envelope (Eligibility and Technical Component) only the above mentioned documents will be checked by the BAC if they are all present using a non-discretionary "pass/fail" criterion to determine each bidder's compliance with the documents required to be submitted for eligibility and the technical requirements.

○ **Other Documents to Support Compliance with Technical Specifications [must be submitted inside the first bid envelope (Eligibility and Technical Component)]**

14. List of at least five (5) completed projects from years 2020 to 2024 with at least one (1) completed project per year. The list should include the following information:
 - Name of Project
 - Location of Project
 - Type of Project
 - Duration of Project

- Contact Persons and Number
- 15. Each completed project must be supported by copy of purchase order, or contract, or equivalent documents, and with Certificate of Satisfactory Performance issued by the supplier's client.
- 16. Manufacturer's Authorization or Certification or equivalent document to prove that the bidder is an authorized seller/distributor of the offered product.
- 17. Certificate of Inspection issued by LANDBANK Facilities Management Department (FMD).
- 18. Brochure or other official documents coming from the manufacturer indicating the specifications of the product being offered.
- 19. Submission of the following documents for the personnel to be assigned/employed in the project:

Electrical/Mechanical Engineer	Safety Officer
1. Curriculum Vitae	1. Curriculum Vitae
2. Certificate of Employment	2. BOSH Certification from training institution accredited by the Department of Labor and Employment (DOLE).
3. Copy of current and valid Professional Regulation Commission (PRC) Identification Card (ID)	

- **Post-Qualification Documents/Requirements – [The bidder may submit the following documents/requirements within five (5) calendar days after receipt of Notice of Post-Qualification]:**

- 20. Business Tax Returns per Revenue Regulations 3-2005 (BIR No.2550 Q) VAT or Percentage Tax Returns for the last two (2) quarters filed manually or through EFPS.
- 21. Latest Income Tax Return filed manually or through EFPS.
- 22. Original copy of Bid Security (if in the form of a Surety Bond, submit also a certification issued by the Insurance Commission).
- 23. Original copy of duly notarized Omnibus Sworn Statement (OSS) (sample form - Form No.6).
- 24. Duly notarized Secretary's Certificate designating the authorized signatory in the Contract Agreement if the same is other than the bidder's authorized signatory in the bidding (sample form – Form No. 7).

Financial Component (PDF File)

- ***The Financial Component shall contain documents sequentially arranged as follows:***

1. Duly filled out Bid Form signed by the Bidder's authorized representative (sample form - Form No.1).
2. Duly filled out Schedule of Prices signed by the Bidder's authorized representative (sample form - Form No.2).
3. Dully filled out Bill of Quantities Form (Annex E) signed by the Bidder's authorized representative.

Note: The forms attached to the Bidding Documents may be reproduced or reformatted provided the information required in the original forms and other requirements like signatures, if applicable, are complied with in the submittal.



TERMS OF REFERENCE

A. Name and Description of Project

One (1) Lot – Supply, Delivery, Installation, Testing and Commissioning of One (1) Unit 320kW/400kVA Standby Generator Set at LANDBANK Aurora Boulevard Office Building, including Dismantling and Hauling-out of Existing Generator Sets to LANDBANK Antipolo Warehouse.

B. Objective

- To replace and upgrade the dilapidated one (1) unit 125 kVA and one (1) unit 75 kVA existing generator sets.
- To guarantee backup power supply for the LANDBANK Aurora Boulevard Office Building during power failures and scheduled shutdowns.
- To ensure safe, efficient, reliable and continuous power supply at LANDBANK Aurora Boulevard Office Building.

C. Project Requirements

• Qualification Requirements

Particulars	Documentary Requirements
1. The supplier must have a minimum of five (5) years' experience in the supply, delivery, installation, testing and commissioning of generator sets.	<ul style="list-style-type: none">• List of at least five completed projects from Years 2020 to 2024, with at least one completed project per year. The list should include the following information:<ul style="list-style-type: none">a. Name of Projectb. Location of Projectc. Duration of Projectd. Contact Persons and contact numbers• Copy of Purchase Order or Contract or equivalent documents; and• Certificate of Satisfactory Performance issued by the client for each contract.
2. The supplier must be an authorized distributor or seller and service center of the offered generator set.	Manufacturer's certificate (for distributors) <u>OR</u> back-to-back certification from the manufacturer and the authorized distributor (for resellers).

Particulars	Documentary Requirements
3. The supplier must conduct a pre-inspection, verification, and overall project assessment within seven (7) calendar days after the Pre-Bid Conference.	Certificate of Inspection issued by the Facilities Management Department.
4. The offered generator must comply with all the specifications and requirements outlined in this TOR.	<ul style="list-style-type: none"> Official brochures or any official documents from the manufacturer showing the specifications of the offered product.
5. The following must be part of the team members to implement the project: <ul style="list-style-type: none"> One (1) Electrical Engineer (EE) or Mechanical Engineer (ME) who is a regular employee of the supplier, with a minimum of five years of experience in the industry. One (1) Safety Officer (SO) with a minimum of five years of experience in the industry. The SO must have completed a Basic Occupational Safety and Health (BOSH) training program. 	For EE or ME <ul style="list-style-type: none"> Curriculum Vitae Certificate of Employment Copy of current and valid Professional Regulation Commission (PRC) Identification Card (ID) For SO <ul style="list-style-type: none"> Curriculum Vitae BOSH Certification from a training institution accredited by the Department of Labor and Employment (DOLE)

• **Technical Specifications**

Description	Specifications
1. Electrical Output and Performance	
Standby Power Rating	320kW/400kVA at 0.8 power factor (pf), Open Type
Rated Voltage	400 (± 10%) Volts
Frequency (Hz)	60 Hertz (Hz)
Number of Phase	Three (3)
2. Engine	
Prime Mover	500 – 700 Hp (min-max)
Compression Ratio	17:1 (maximum)
No. of Cylinders	six (6)
Type	In-Line – Configuration Diesel Engine
No. of Stroke	4- Stroke- Cycle
Bore x Stroke	125 to 150 mm x 150 to 170 mm (minimum to maximum)
Displacement	11 to 20 L (minimum to maximum)
Rated Speed	1800 revolution per minute (rpm)
Governor	Mechanical / Electronic
Aspiration	Turbocharged Air to Air After cooled
Cooling System	Radiator-Water Cooled
Starting system	Electric

Description	Specifications
3. Alternator	
Rated Output	320kW/400kVA
Type	Self-excited, brushless alternator
Insulation	Class H
Voltage Regulator	Automatic Voltage Regulator
Stator No. of Bearing	Single or Double Bearing
Certifications	National Electrical Manufacturer Association (NEMA) - MG1, Institute of Electrical and Electronics Engineers (IEEE) and American National Institute (ANSI)
Ventilations	Self-Ventilated and Drip-Proof
4. Engine Electrical System	
Battery charging alternator	Ground (negative/positive) Volts (DC): 24 V (\pm 5%) Ampere Rating: 30 to 45 A Starter Motor voltage (DC): 24V Battery, cold cranking Battery Voltage (DC): 12V
5. Fuel System	
Recommended Fuel	Diesel
Fuel Injection	Mechanical Direct Injection or Electronics Injection
6. Engine Fuel Consumption	
At 100 % load with fan	60 to 95 L/hr (minimum to maximum)
At 75 % load with fan	40 to 85 L/hr (minimum to maximum)
At 50 % load with fan	30 to 65 L/hr (minimum to maximum)
7. Exhaust System	Stainless Steel exhaust flex, gaskets, rain cap and Society of Automotive Engineering (SAE) exhaust flange
8. Control Panel	Digital Metering Engine Complete Parameters (kW, kVA, rpm, Volts, Battery Voltage Drop, Amperes, Temperature, Pressure, etc.) Generator Protection Functions Engine Protection Windows-Based Software (MAC or Proprietary) Operating Hours
9. Safety Devices and Protection	Overload Protection Low Oil Pressure Shutdown High Water Temperature Protection Emergency Stop Button Fuel Shut-Off Solenoid Circuit Breaker Ground Fault Protection Battery Charger Protection
10. Standard Accessories	Residential exhaust silencer Flexible exhaust connector Set mounted control panel with controller Repair Kit

Description	Specifications
	1. Resiliently mounted on a common base skid 2. Fuel / water separator 3. Lead acid starting battery 4. Operations Manual 5. Test Port 2 pcs (maximum) 6. Vibro Spring Pad Insulator (Heavy Duty) 6 pcs (minimum)
11. Emission	Environmental Protection Agency (EPA) Certified or Emission Test Compliance Certificate Under Clean Air Act Limits (CAA) limits of the following chemicals: Sulfur Oxide (SO ₂) 1,500 mg/Ncm at maximum Nitrogen Oxide (NO ₂) 2,000 mg/Ncm at maximum Carbon Monoxide (CO) 500 mg/Ncm at maximum

• **Scope of Works**

Particulars	Activities
Mobilization and Dismantling works	
Permits and Licenses	<ul style="list-style-type: none"> Acquisition of Installation permit from Office of Building Officials, Quezon City Acquisition of DENR Permit, Mechanical Permit to Install and Operate (Generator Set), Certificate of Compliance (COC) from the Energy Regulatory Commission (ERC) and other necessary permits/legal requirements for the installation and operation of the Gen-Set. Acquisition of work authorization permit from FMD prior to implementation of activities
Mobilization	<ul style="list-style-type: none"> Mobilization of manpower, tools and equipment including test instrument to site
Delivery of Materials	<ul style="list-style-type: none"> 400 kVA generators Wires/ Cables Panelboards Accessories that are essential for project completion.
Dismantling and Hauling	<ul style="list-style-type: none"> Dismantling of the existing dilapidated generator sets and its auxiliary components. Disconnection of existing feeder lines and roughing-ins Hauling of the dismantled generator set and feeder lines which will be stored at LANDBANK Antipolo Warehouse
Installation and restoration work	
Mechanical Works	7. One (1) unit brand new Generator Sets, radiator assembly (to be engine mounted at site) and other accessories (e.g., Muffler, Ducting, and other attachments) including lifting, hauling, rigging, mounting and alignment from drop off point to its designated location at Generator Set Room.

Revised Annex D-4

Particulars	Activities
	<p>8. Schedule 40 Stainless Steel pipe and residential type muffler for each Gen-Set exhaust system, complete with flexible connectors, expanders, gasket, American National Standard Institute (ANSI) flanges, S.S elbows (90°) and (45°), hangers, spring type supports, standard test port with flange and cover, wall thimble with caulking, and flapper/ rain cap. Pipes inside the power house shall be insulated with 2-inch Rockwool insulation and wrapped with Gauge # 22 Aluminum Cladding. Pipes extending outside the power house shall be painted with high heat aluminum paint. Gauge #18 radiator ducting complete with canvass cloth, stiffeners, brackets, hangers, Stainless Steel wire mesh and supports.</p> <p>One (1) inch schedule 40 seamless Stainless-Steel pipes to connect the existing fuel pipes to the Gen-Set, complete with flexible hoses, fittings, elbows, gate valves, check valves, wye strainer between each Gen-Set and the Field Device Tool (FDT). This includes the supply and installation of fuel and water separator with bypass line.</p>
Electrical Works	<p>Battery charger, including 6 x 3.5 sq. mm THW and 1 x 2.0 sq. mm THW (Green) in liquid tight flexible conduit from 240VAC to electrical outlet to battery charger and from battery charger's 24VDC output to Gen-Set's DC terminal. This shall also include the supply and installation of 30A circuit breaker for the protection of each battery charger.</p> <p>Three (3) sets of (3-250 mm² THHN) Rated power cables from 400kVA Generator Set going to 1200AT Automatic Transfer Switch (ATS) in 3½" mm Ø IMC with 1 x 50 mm² bare copper wire to be provided ground tapping point within the generator room.</p> <p>Long barrel, crimp type cable terminal lugs at each end of each run of power cables</p> <p>Ladder type cable tray complete with hangers, supports, bonding wires, and other necessary accessories.</p>
Civil Works	<p>Removal of any obstruction on the pathway of Gen-Set prior to hauling and rigging. Chipping and restoration of any damaged finishes and/or concrete structures.</p> <p>Construction of Generator Set Room and Generator Set Pad (Please see attached Genset room plan for details)</p>
Testing and Commissioning	<p>Duly accomplished form showing the electrical and mechanical parameters of the generator set, tested under the following conditions:</p> <p>a. Load testing at the supplier/manufacturer's warehouse with the presences of FMD personnel on the actual testing. Total of three sets, wherein each set is broken down as follows:</p> <ul style="list-style-type: none"> • at 0% load, 10 mins • at 25% load, 10 mins • at 50% load, 10 mins • at 75% load, 10 mins

Particulars	Activities
	<ul style="list-style-type: none"> at 100% load, 20 mins at 100% shock load, after running for the 3 sets. shaker / vibration test alternator test validation <p>b. Final Testing and Commissioning at the Project site</p> <ul style="list-style-type: none"> at 50% load of the building, 1 hour at 75% load of the building, 1 hour at 100% load of the building, 1 hour <p>c. Standards and compliance for temperature rise and motor starting</p> <ul style="list-style-type: none"> maintaining 80 to 90 deg. Celsius
Demobilization	<ul style="list-style-type: none"> Pull-out tools, equipment, waste and debris Clearing and cleaning of the affected areas
Warranty	<ul style="list-style-type: none"> One (1) year warranty against factory/manufacturing defects on equipment, components and parts supplied and against faulty workmanship to commence upon receipt of final turn-over and acceptance documents Conduct Preventive Maintenance service during warranty period to be conducted every thirty (30) calendar days after commissioning, which include the following activities: <ul style="list-style-type: none"> Visual inspection of the installed generator set, ATS, and its components Defective components/parts must be immediately replaced without additional cost to the bank Change oil after 500 running hours or one (1) year whichever comes first <ul style="list-style-type: none"> Replacement of fuel filters upon change oil Cleaning of radiation coils and fins Replacement of radiator coolant
Training and orientation	<ul style="list-style-type: none"> Conduct training for data center, Aurora Blvd. branch and maintenance personnel for the operations, basic maintenance and basic trouble shooting of the anew equipment.

• **Submittals:**

Documents	Submission Period
Copy of CGLI and personal insurance covering bodily injury and property damage. Covering the full CGLI coverage for the entire duration of the project.	Upon issuance if Notice to Proceed and prior to actual implementation of project.
GANTT chart showing project schedules	
Clearances/permits as may be required by Government Agencies relative to the project.	On a daily basis until completion of the project.
List of personnel and equipment for the project implementation and electrically-operated tools/equipment with corresponding power rating.	
Activity/Service report	

Documents	Submission Period
Seven (7) sets of duly signed and sealed by PME as-built plan/layout diagram on the entire system (blueprint) and digitized /soft copy in Flash Disk Drive (e.g. CAD, JPEG, PDF)	On daily basis until completion of the project.
One (1) year warranty certification to commence upon receipt of final turn-over and acceptance documents	Upon project turn-over and acceptance.
Comprehensive report load containing electrical and mechanical parameters of generator set	

D. Delivery Schedule

One hundred eighty (180) calendar days upon receiving of Notice to Proceed (NTP) issued by Procurement Department. Installation must be scheduled in coordination with the Facilities Management Department (FMD).

E. Payment Terms

1. LANDBANK shall pay the Supplier for the item delivered/services rendered subject to accounting and auditing rules of LANDBANK and Commission on Audit.
2. The winning supplier/contractor is required to maintain a deposit account with LANDBANK cash department or any of its branches. This directive is pursuant to Malacañang Executive Order No. 170-Adoption of Digital Payments for Government Disbursement and Collections, directing all government agencies to utilize safe and efficient digital disbursement in the payment of goods, services and other disbursement.
3. Payment shall be through credit to the winning supplier's/contractor deposit account with LANDBANK.
4. The supplier will be paid within sixty (60) calendar days after the submission of billing and complete documentary requirements.

F. Updated Tax Clearance

Updated Tax Clearance shall be presented by the supplier/contractor in accordance with Executive Order No. 398, Series of 2005 and BIR Regulations No.17-2024 prior to final settlement of government contracts.

G. Liquidated Damages

If the winning bidder fails to deliver any or all of the goods and/or services within the period/s specified in this Contract, the Bank shall, without prejudice to its other remedies under this Contract and under the Applicable Law, deduct from the contract price, as liquidated damages, a sum equivalent to one-tenth of one percent (0.001) of the price of the unperformed portion of the goods and/or services for each day of delay based on the approved contract. LANDBANK

need not prove that it has incurred actual damages to be entitled to liquidated damages. Such amount shall be deducted from any money due or which may become due to Supplier. In case the total sum of liquidated damages reached ten percent (10%) of the total contract price, LANDBANK may rescind the contract and impose appropriate sanctions over and above the liquidated damages to be paid.

H. Other Terms and Condition

1. Prior to the bidding proper, interested contractors must conduct inspection, verification, and overall project assessment. A corresponding Certificate of Inspection (CI) shall be issued by the LANDBANK - Facilities Management Department (FMD) which shall form part of the bidding requirements/submittals. Non-inspection/submission of CI will result to outright disqualification of the bid.
2. The winning contractor/supplier/service provider shall:
 - a. Coordinate with FMD for schedules and project briefing. Work authorization permit must be secured to FMD prior to any mobilization.
 - b. Deploy competent technicians/workers with vast experience and expertise in the entire undertaking and implementation of the project.
 - c. Provide its workers with the required personal protective equipment and appropriate tools in the implementation of the project. In compliance with the requirement of Environmental Management Program in accordance with ISO 14001 standards.
 - d. Be liable and solely responsible for any harm, damage and injury that may be incurred or suffered by its own crew/workers or any other person in the implementation of the project and to any damage to the Bank's property arising from the acts whether partial, contributory or due entirely to the fault, negligence and/or dishonesty of its workers in the course of their duties.
 - e. Maintain cleanliness at all times. It shall be responsible for the collection and proper disposal - outside of the Bank premises, of all waste materials resulting from any activity related to the implementation of the project.
 - f. Be bounded by and shall strictly observe the Bank's existing rules and regulations with regards to the standard security policies and procedures while in the premises.

1 AS FOUND SECOND FLOOR PLAN
SCALE: 1/8"=1'-0" METERS

2 PROPOSED SECOND FLOOR PLAN
SCALE: 1/8"=1'-0" METERS

Annotations for Plan 1 (AS FOUND):

- DISMANTLING OF STEEL STAIRS AND STEEL STAIRWAY T.W. A-Z-U-X
- REPAIRING OF GLASS DOOR AND WICKER PARTS
- DEMOLITION OF ONE WALL
- DEMANTING OF GLASS PANELS TO BE RE-ASSEMBLED
- DEMANTING OF CHOP WALLS

Annotations for Plan 2 (PROPOSED):

- PROPOSED ROOF SLAB FOR GUEST ROOM
- MODIFICATION OF STEEL STAIRS
- PROPOSED PARTITION WALLS AT GUEST ROOM

CLASS D

3a FOUNDATION PLAN
SCALE 1/100 METERS

3b COLUMN & FOOTING DETAIL
SCALE 1/100 METERS

3c ROOF DECK FRAMING PLAN
SCALE 1/100 METERS

3d C2F2 DETAIL
SCALE 1/100 METERS

3e ROOF GIRDER DETAIL
SCALE 1/10 METERS

3f SECTION THRU C - C
SCALE 1/100 METERS

3 GENSET ROOM DETAIL

ER AND
BANK
ING

APPROVED FOR LAY
OUT THE DESIGN LAY

DR. ENRICO DA. SAMANIGO
SCALE 1/100

SHEET CONTENT

ALL PLANS AND SECTIONS IN THIS PLAN AND
PROPOSED REINFORCED CONCRETE PLAN
GENSET ROOM DETAIL

REVISIONS

DESIGNER: K. COMATU

DRAWN: S. S. S.

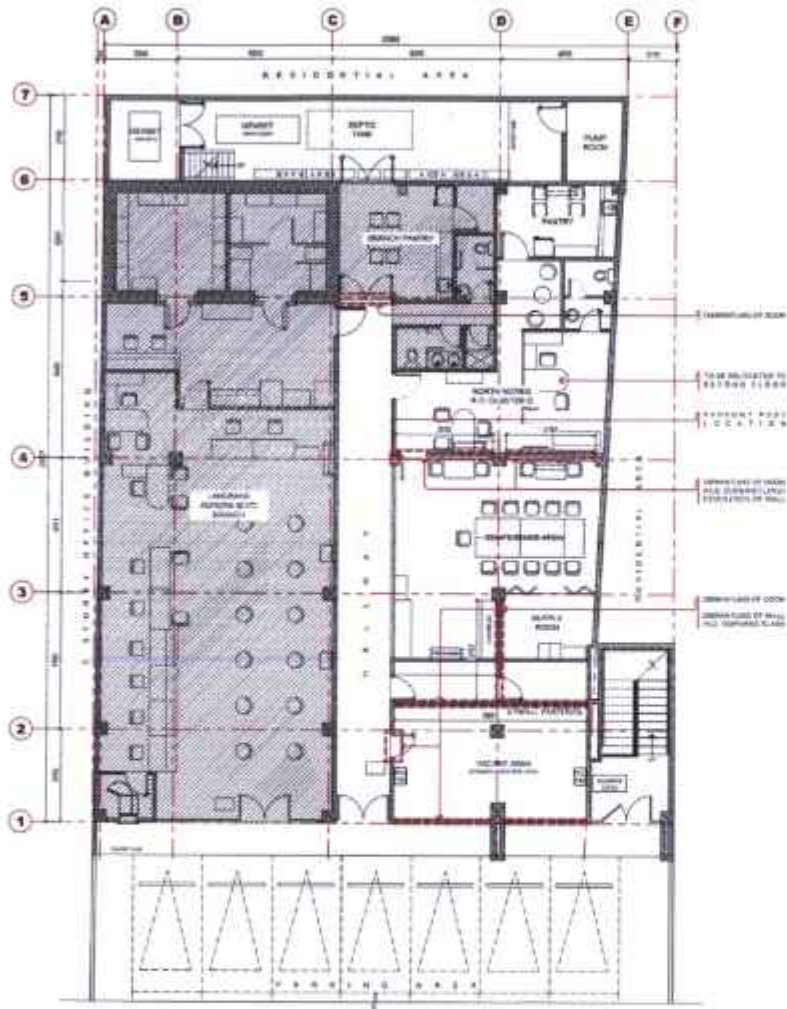
DATE: 22 JANUARY 2020

CHECKED: K. COMATU

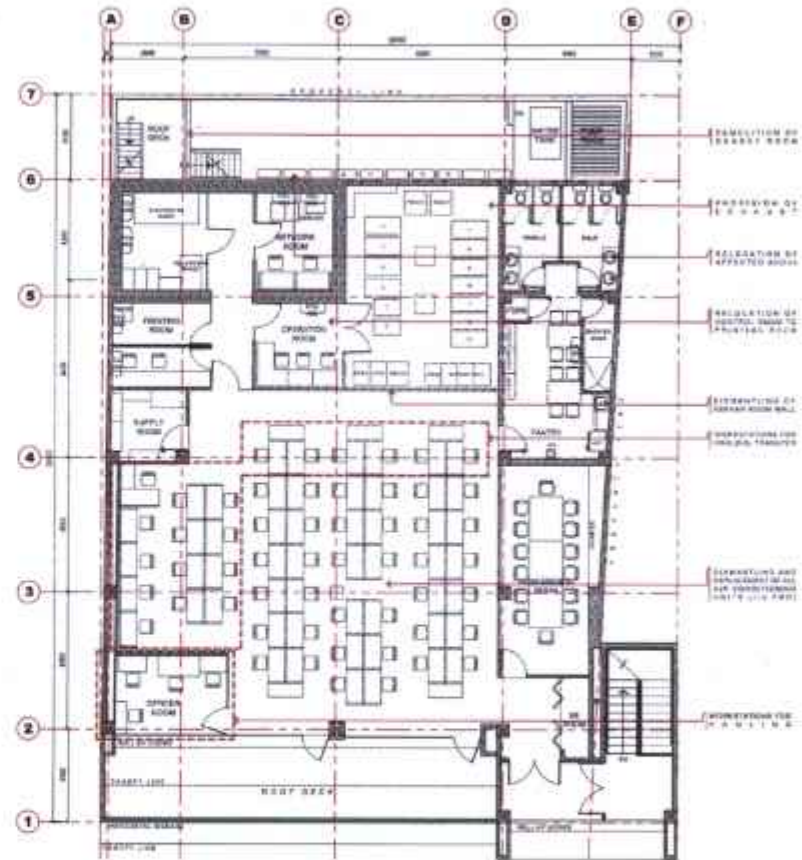
DATE:

S
3

period Annex 0-10



1 AS FOUND GROUND FLOOR PLAN
A-2 SCALE 1:100 METERS



2 AS FOUND SECOND FLOOR PLAN
A-2 SCALE 1:100 METERS



LANDBANK OF THE PHILIPPINES
PROJECT MANAGEMENT & ENGINEERING (PMPE)
1000 W.A. 30, FOURTH FLOOR, DIVISORIO ST., MALAY, MANILA

PROJECT: MARSH C. PADUA
RMS. NO.: 000000
PTR. NO.: 000000
RAJAH. NO.: 000000
RAJAH. NO.: 000000

PROPOSED AURORA DATA CENTER AND
CCD SATELLITE OFFICE AT LANDBANK
AURORA BLVD. OFFICE BUILDING
LOCATION: 100 AURORA BOULEVARD, NEW MANILA, DIVISORIO ST.

APPROVED FOR THE
FOR THE PROJECT
DR. ENRICO D.J. SAMARINO
1000 W.A. 30

AS FOUND GROUND FLOOR PLAN
AS FOUND SECOND FLOOR PLAN

DESIGN: M.PADUA
DRAWN: M.PADUA
DATE: 10 JANUARY 2021
FOR: M.PADUA
DATE:

revised Annex D-11



1999-2000, 2000-2001, 2001-2002, 2002-2003, 2003-2004, 2004-2005, 2005-2006, 2006-2007, 2007-2008, 2008-2009, 2009-2010, 2010-2011, 2011-2012, 2012-2013, 2013-2014, 2014-2015, 2015-2016, 2016-2017, 2017-2018, 2018-2019, 2019-2020, 2020-2021, 2021-2022, 2022-2023, 2023-2024, 2024-2025, 2025-2026, 2026-2027, 2027-2028, 2028-2029, 2029-2030, 2030-2031, 2031-2032, 2032-2033, 2033-2034, 2034-2035, 2035-2036, 2036-2037, 2037-2038, 2038-2039, 2039-2040, 2040-2041, 2041-2042, 2042-2043, 2043-2044, 2044-2045, 2045-2046, 2046-2047, 2047-2048, 2048-2049, 2049-2050, 2050-2051, 2051-2052, 2052-2053, 2053-2054, 2054-2055, 2055-2056, 2056-2057, 2057-2058, 2058-2059, 2059-2060, 2060-2061, 2061-2062, 2062-2063, 2063-2064, 2064-2065, 2065-2066, 2066-2067, 2067-2068, 2068-2069, 2069-2070, 2070-2071, 2071-2072, 2072-2073, 2073-2074, 2074-2075, 2075-2076, 2076-2077, 2077-2078, 2078-2079, 2079-2080, 2080-2081, 2081-2082, 2082-2083, 2083-2084, 2084-2085, 2085-2086, 2086-2087, 2087-2088, 2088-2089, 2089-2090, 2090-2091, 2091-2092, 2092-2093, 2093-2094, 2094-2095, 2095-2096, 2096-2097, 2097-2098, 2098-2099, 2099-2100, 2100-2101, 2101-2102, 2102-2103, 2103-2104, 2104-2105, 2105-2106, 2106-2107, 2107-2108, 2108-2109, 2109-2110, 2110-2111, 2111-2112, 2112-2113, 2113-2114, 2114-2115, 2115-2116, 2116-2117, 2117-2118, 2118-2119, 2119-2120, 2120-2121, 2121-2122, 2122-2123, 2123-2124, 2124-2125, 2125-2126, 2126-2127, 2127-2128, 2128-2129, 2129-2130, 2130-2131, 2131-2132, 2132-2133, 2133-2134, 2134-2135, 2135-2136, 2136-2137, 2137-2138, 2138-2139, 2139-2140, 2140-2141, 2141-2142, 2142-2143, 2143-2144, 2144-2145, 2145-2146, 2146-2147, 2147-2148, 2148-2149, 2149-2150, 2150-2151, 2151-2152, 2152-2153, 2153-2154, 2154-2155, 2155-2156, 2156-2157, 2157-2158, 2158-2159, 2159-2160, 2160-2161, 2161-2162, 2162-2163, 2163-2164, 2164-2165, 2165-2166, 2166-2167, 2167-2168, 2168-2169, 2169-2170, 2170-2171, 2171-2172, 2172-2173, 2173-2174, 2174-2175, 2175-2176, 2176-2177, 2177-2178, 2178-2179, 2179-2180, 2180-2181, 2181-2182, 2182-2183, 2183-2184, 2184-2185, 2185-2186, 2186-2187, 2187-2188, 2188-2189, 2189-2190, 2190-2191, 2191-2192, 2192-2193, 2193-2194, 2194-2195, 2195-2196, 2196-2197, 2197-2198, 2198-2199, 2199-2200, 2200-2201, 2201-2202, 2202-2203, 2203-2204, 2204-2205, 2205-2206, 2206-2207, 2207-2208, 2208-2209, 2209-2210, 2210-2211, 2211-2212, 2212-2213, 2213-2214, 2214-2215, 2215-2216, 2216-2217, 2217-2218, 2218-2219, 2219-2220, 2220-2221, 2221-2222, 2222-2223, 2223-2224, 2224-2225, 2225-2226, 2226-2227, 2227-2228, 2228-2229, 2229-2230, 2230-2231, 2231-2232, 2232-2233, 2233-2234, 2234-2235, 2235-2236, 2236-2237, 2237-2238, 2238-2239, 2239-2240, 2240-2241, 2241-2242, 2242-2243, 2243-2244, 2244-2245, 2245-2246, 2246-2247, 2247-2248, 2248-2249, 2249-2250, 2250-2251, 2251-2252, 2252-2253, 2253-2254, 2254-2255, 2255-2256, 2256-2257, 2257-2258, 2258-2259, 2259-2260, 2260-2261, 2261-2262, 2262-2263, 2263-2264, 2264-2265, 2265-2266, 2266-2267, 2267-2268, 2268-2269, 2269-2270, 2270-2271, 2271-2272, 2272-2273, 2273-2274, 2274-2275, 2275-2276, 2276-2277, 2277-2278, 2278-2279, 2279-2280, 2280-2281, 2281-2282, 2282-2283, 2283-2284, 2284-2285, 2285-2286, 2286-2287, 2287-2288, 2288-2289, 2289-2290, 2290-2291, 2291-2292, 2292-2293, 2293-2294, 2294-2295, 2295-2296, 2296-2297, 2297-2298, 2298-2299, 2299-2300, 2300-2301, 2301-2302, 2302-2303, 2303-2304, 2304-2305, 2305-2306, 2306-2307, 2307-2308, 2308-2309, 2309-2310, 2310-2311, 2311-2312, 2312-2313, 2313-2314, 2314-2315, 2315-2316, 2316-2317, 2317-2318, 2318-2319, 2319-2320, 2320-2321, 2321-2322, 2322-2323, 2323-2324, 2324-2325, 2325-2326, 2326-2327, 2327-2328, 2328-2329, 2329-2330, 2330-2331, 2331-2332, 2332-2333, 2333-2334, 2334-2335, 2335-2336, 2336-2337, 2337-2338, 2338-2339, 2339-2340, 2340-2341, 2341-2342, 2342-2343, 2343-2344, 2344-2345, 2345-2346, 2346-2347, 2347-2348, 2348-2349, 2349-2350, 2350-2351, 2351-2352, 2352-2353, 2353-2354, 2354-2355, 2355-2356, 2356-2357, 2357-2358, 2358-2359, 2359-2360, 2360-2361, 2361-2362, 2362-2363, 2363-2364, 2364-2365, 2365-2366, 2366-2367, 2367-2368, 2368-2369, 2369-2370, 2370-2371, 23

1. The first step is to identify the problem or question that needs to be answered. This involves understanding the context and the specific requirements of the task.

DECLASSIFIED BY: 6032 BUREAU OF RECORDS MANAGEMENT, 2000 MAR 20 10 11

DR. ENRICO D. SAMANIEGO
M.D. 1969

447 11/20/2015 11:20:00 AM
448 11/20/2015 11:20:00 AM

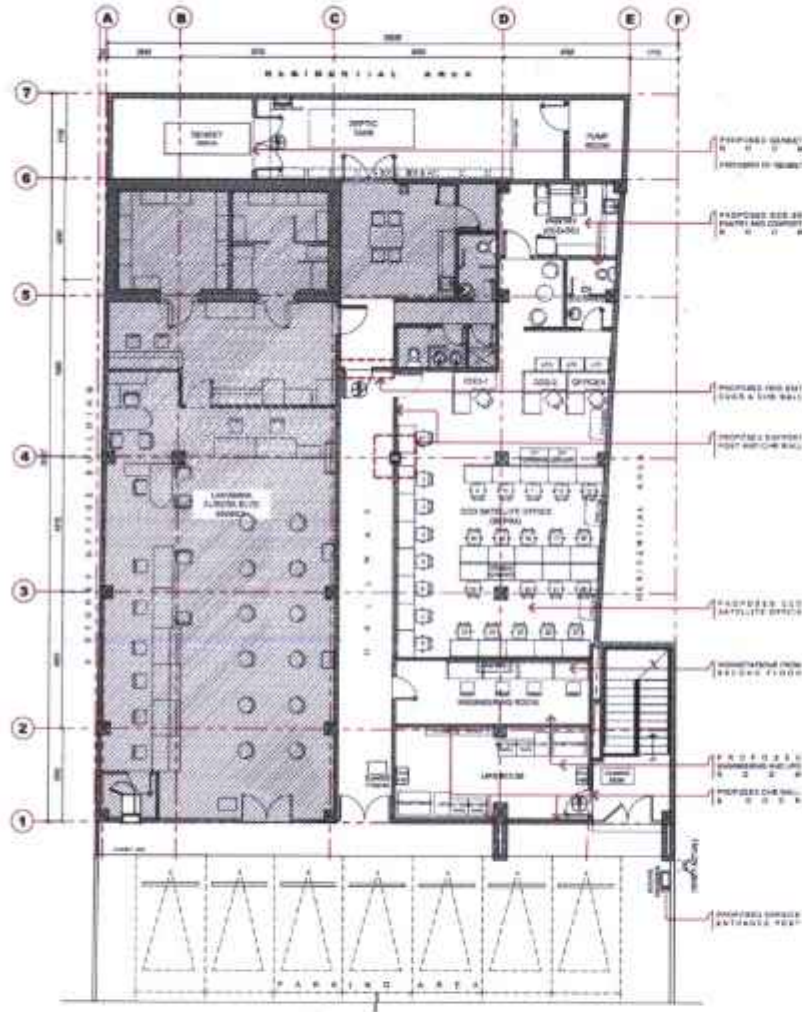
10	
11	
12	

[illegible]

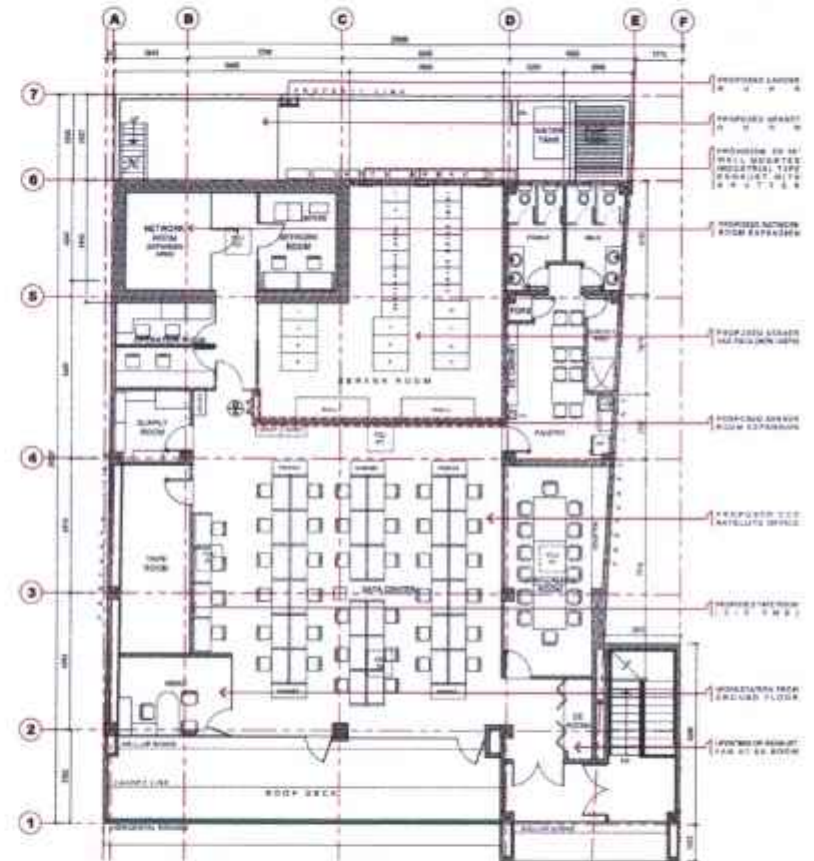
$\frac{S}{2}$

Revised Annex D-12

CLASS D



1 PROPOSED GROUND FLOOR PLAN
A-3 SCALE 1:100 METERS



2 PROPOSED SECOND FLOOR PLAN
A-3 SCALE 1:100 METERS



LANDBANK OF THE PHILIPPINES
PROJECT MANAGEMENT & ENGINEERING DEPT.
300 ALAM DEL PILAR ST., CORNER OF SUITE 101, MALATE, MANILA

ARCHITECT: MARION C. PADUA
REL. NO.: 000000
PTR. NO.: 000000
ISSUED BY: MARION C. PADUA
DATE: 00-00-00

PROJECT TITLE: PROPOSED AURORA DATA CENTER AND CCD SATELLITE OFFICE AT LANDBANK AURORA BLVD. OFFICE BUILDING
LOCATION: 100 AURORA BOULEVARD, NEW BAKULANG, QUEZON CITY

APPROVED FOR LUP: DR. ENRICO D.J. BARRERA
DATE: 00-00-00

SHEET CONTENT: PROPOSED GROUND FLOOR PLAN
PROPOSED SECOND FLOOR PLAN

REVISIONS:

DATE: 19 JANUARY 2024
DRAWN: SARU
CHECKED: MJPADUA
DATE: 00-00-00

A
3

PRIMER CODE	SYNCHRONIZED WHISKALAE AND GURFEL SIZE AND TYPE
W-10-225-000	FOR MAXIMUM EXTENSION (ELONGATION 3.5 TO 4.0) AND 1 (DOWN) THIN WHISKALAE IN 1 (2) (3) (4)
W-10-175-000	5 (6) (7) OF 4 (5) (6) AND 1 (DOWN) THIN WHISKALAE IN 1 (2) (3) (4)
W-10-150-000	1 (2) (3) OF 3.5 (4) AND 1 (DOWN) THIN WHISKALAE IN 1 (2) (3) (4)
W-10-125-000	3 (DOWN) AND 1 (DOWN) THIN WHISKALAE IN 1 (2) (3) (4)
W-10	5 (DOWN) THIN WHISKALAE IN 1 (2) (3) (4)
W-10-100-000	3 (DOWN) AND 1 (DOWN) THIN WHISKALAE IN 1 (2) (3) (4)
W-10-75-000	2 (DOWN) AND 1 (DOWN) THIN WHISKALAE IN 1 (2) (3) (4)
W-10-50-000	1 (DOWN) AND 1 (DOWN) THIN WHISKALAE IN 1 (2) (3) (4)
W-10-25-000	1 (DOWN) AND 1 (DOWN) THIN WHISKALAE IN 1 (2) (3) (4)
W-10-10-000	1 (DOWN) AND 1 (DOWN) THIN WHISKALAE IN 1 (2) (3) (4)
W-10-5-000	1 (DOWN) AND 1 (DOWN) THIN WHISKALAE IN 1 (2) (3) (4)
W-10-1-000	1 (DOWN) AND 1 (DOWN) THIN WHISKALAE IN 1 (2) (3) (4)



PROJECT MANAGEMENT & ENGINEERING DEPT.
1500 N. GULF BLVD. ST. CYPRIEN DE QUINCY ST. WILKIE, MAIA

PRC NO.:	VALDZT:
PTN NO.:	DATE ISSD:
ISSUED AT:	TO:

**PROPOSED LANDBANK CCD SATELLITE OFFICE AND DATA CENTER
AT LANDBANK AURORA BLVD. OFFICE BUILDING**

NOTED BY:	PREPARED BY:	CHARGE (PT):	RECEIVED:
JOHN ALLEN V. MISLANS	D. PONCE	500	

ENRICO D.J. SAMANIEGO
HEAD, PNEU

DATA & COMMUNICATION
WHOLE LINE DIAGRAM
FOR CDD

EC6	EC6
-----	-----

10

RESPONSES TO BIDDER'S QUERIES AND/OR SUGGESTIONS

DATE	May 28, 2025
PROEJECT INDENTIFICATION NO.	LBP-GIBAC-ITB-GS-20250312-01
PROJECT NAME	Generator Set for LANDBANK Aurora Boulevard Office Building
PROPONENT UNIT/TECHNICAL WORKING GROUP	

ITEM NO.	PORTION OF BIDDING DOCUMENTS	QUERIES AND/OR SUGGESTIONS	LANDBANK's RESPONSES
1		Provide the detailed plans for construction of the genset house/room and genset foundation (with equipment layout)	Please see attached
2	Terms Of Reference, Electrical Works	Who will supply the 1200A ATS? Please provide details of the ATS (For us to be sure that the 400kva genset will be compatible to the said ATS)	We have parallel project with our engineering department. The installation of ATS was included in their scope (BY OTHERS). Please see attached single line diagram for ATS and CABLE size
3	Terms Of Reference, Installation and restoration work	Please elaborate our scope on the 'Repairs & Restorations' Particulars	Repairs and Restorations will pertain on the civil works, paintings and other damaged/affected on our facility upon delivery and installation of the generator set.
4	Terms Of Reference, Testing and Commissioning	Should we provide dummy loadbanks for the 50%, 75%, 100% (1 hour each) site load testing?	As per TERM OF REFERENCE, on final testing and commissioning at the project site. The load be used will be the load of the building.

Prepared by:

JEHOMAR PABLO
EMT, FMD-FSU

Checked by:

ENRICO DEL ROSARIO
DC, EMT, FMD-FSU

Endorsed by:

JULIUS C. ILAG
ADA, FMD-FSU

Approved by:

FLORDELYN A. CERILLA
OIC, FMD

ANNEX H-1

RESPONSES TO BIDDER'S QUERIES AND/OR SUGGESTIONS

DATE	June 5, 2025
PROEJECT INDENTIFICATION NO.	LBP-GIBAC-ITB-GS-20250312-01
PROJECT NAME	Generator Set for LANDBANK Aurora Boulevard Office Building
PROPONENT UNIT/TECHNICAL WORKING GROUP	

ITEM NO.	PORTION OF BIDDING DOCUMENTS	QUERIES AND/OR SUGGESTIONS	LANDBANK's RESPONSES
1		1. Existing Generator set for replacement doesn't have concrete foundation Q. Is their provision of concrete pad for new generator set? If yes, may we request for the design drawings.	Please see attached generator room plan
2		2. For common reference, may we request for the design drawings indicating the following; a. Approved location of generator set and ATS b. Approved conduit or raceway to be used and its route. c. Approved Set, Size and type of wires to be used.	Please see attached single line diagram

Prepared by:

JEHOMAR PABLO
EMT, FMD-FSU

Checked by:

ENRICO DEL ROSARIO
DC, EMT, FMD-FSU

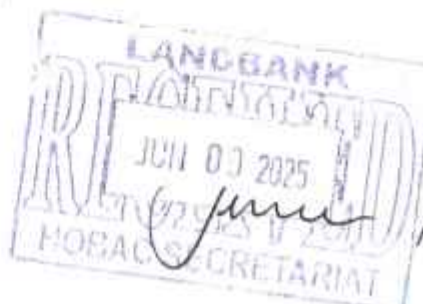
Endorsed by:

JULIUS C. ILAG
ADM, FMD-FSU

Approved by:

ALEXANDER S. LAZARO
VP, FMD

ANNEX H-2



11:05 am